



COMPANY PROFILE

2020



302, building 6, Hesheng industrial park,
FuHai Sub-district, Bao'an, Shenzhen, PRC



www.epowerem.com



info@epowertech.cn



CONTENTS

1

Who We Are

2

Products & Solutions We Offered

3

Capabilities & Services

4

Sales territories & Cases



FOUND

2017

SPECIALIZED IN

Exit Sign | EM Light | EM Driver
Smart Solution for EM Lighting

DEVELOP

≥10 Products / year
ODM acceptable

TEAM

Engineers & Sales



12

Exit Sign

13

EM Light

7

EM Driver

More Products
Under Developing

Epower Tech Co.,Ltd

PRODUCTS & SOLUTIONS WE OFFERED

022

Exit Sign



EPE-EX1



EPE-EX2



EPE-EX3



EPE-EX6



EPE-EM3



EPA-EX1



EPA-EX2



EPU-EX1-S



EPU-EX1-R



EPU-EX2



EPU-EX3



EPU-CB1

Emergency Light



EPE-3W



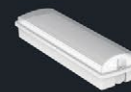
EPE-3W



EPE-EM2



EPE-EM2-IP



EPE-EM3



EPE-EM4



EPE-EM5



EPE-EM6



EPE-EM7



EPA-3W-EM



EPA-3W-EM-SB



EPU-EM1-IP



EPU-EM1

EM Driver



EPE-ED1



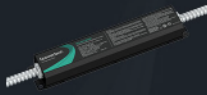
EPE-ED2



EPE-ED3



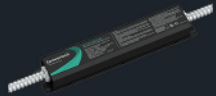
EPE-ED7



EPU-ED1



EPU-ED1-S



EPU-ED1-170V

LiFePO4

LiFePO4 battery technology, safe, environmental friendly, longer lifetime.

Design

Compact & decorative design with competitive price.

Verification

Full experienced and market tested product.

Advanced Testing

Smart automatic test or DALI interface technology optional.



Reduce Labor & Maintenance Cost

IOT WIRELESS FOR EMERGENCY LIGHTING



WiFi



BT



Lora



Mobile



App



User



20+

R&D Engineers

30+

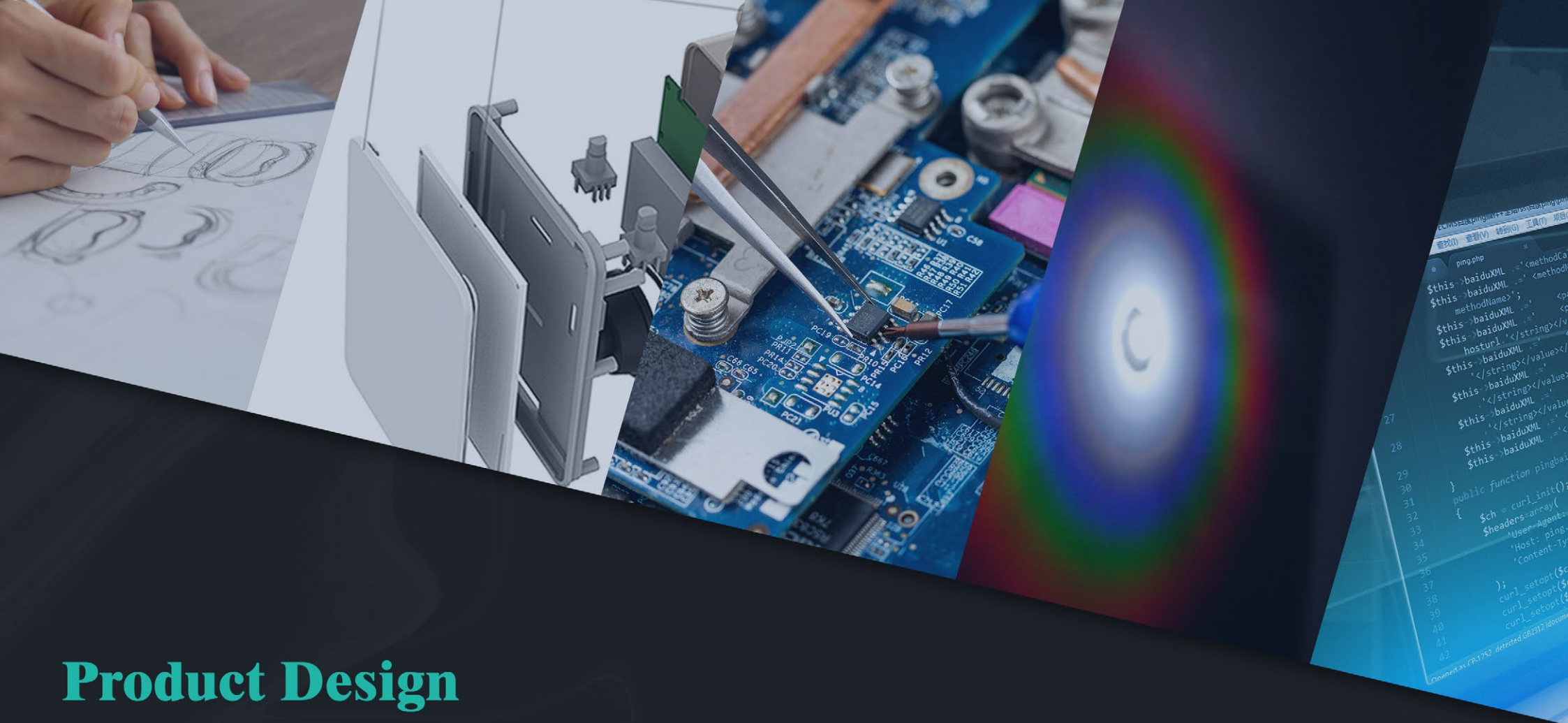
Product quality test

20+

Production line

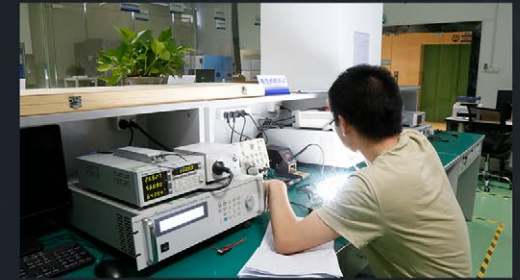
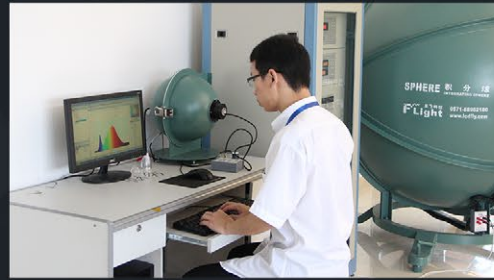
**CAPABILITIES &
SERVICES**

03



Product Design

- Industrial
- Mechanical
- Optical Analysis.
- Electronic
- Software Programming.

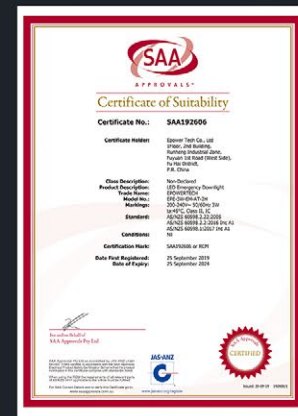
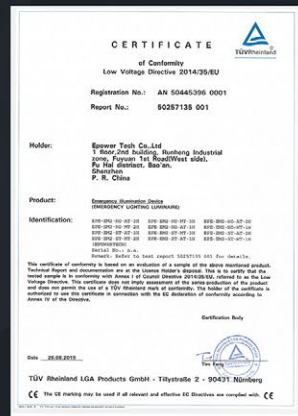


Product Verification

- Professional engineers.
- Full verified product development
- Fast speed & response.
- Advanced testing equipments

Quality Assurance

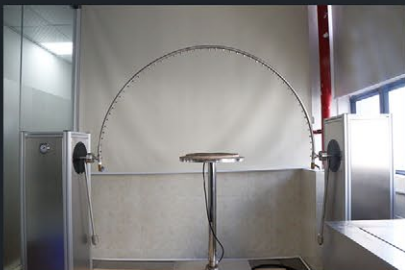
ISO 9001 Certified, CE, CB, SAA, UL, ROHS, CEC Title 20, DALI.....Complied



Epower Tech Co.,Ltd



More than 30 testing facilities



- Thermal Test
- AC Power Source
- Power Meter
- Oven
- Aging Test
- IPX5/X6 Test
- IPX7 Test
- Lifespan Test
- Cord Anchorage Test
- Suspension Test
- DC Power Test
- Electronic Load Test
- Electronic Balance
- Digital Multimeter
- Oscilloscope
- 3D Printer
- IES Test
- Water-proof Test
- Dust-proof Test
- Glow-wire Test
- Needle-flame Test
- Salt Spray Test
- Drop Test
- Draught-proof Test
- Anti-UV Test
- Integrating Sphere
- Safety Test
- Touch Current Test
- Constant Temperature & Humidity Test
- RoHS Test



Manufacturer Center

- More than 20 production line
- Professional QC team
- 100% aging test before shipment
- 8100m² warehouse

Our Service





20+

Exporting country

50+

Case list

SALES TERRITORIES & CASES

04

EUROPE

OCEANIA

MIDDLE
EAST

ASIA

NOR-
AMERICA

SOU-
AMERICA



EXIT SIGN

CASES

Office
&
Basement
Parking

Epower Tech Co.,Ltd



EPE-EX1



EPE-EM3



EM LIGHT

CASES

Office
&
Restaurant

Epower Tech Co.,Ltd



EPE-EM5



EPE-3W-EM



EM DRIVER

CASES

Office
&
Educational
services

Epower Tech Co.,Ltd

EPE-ED2

EPU-ED1



THANK YOU

Looking Forward To Cooperating With You