



# EPE-EM2

LED Emergency Downlight

CE CB  RoHS



## INTRODUCTION

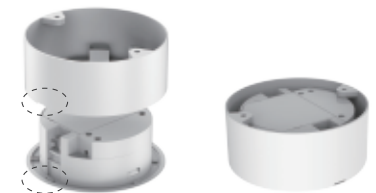
EPE-EM2 LED emergency down light is controlled by smart IC, with self-test function. 3W for standard and 6W for high output model, It is All In One type including open area and corridor lens, recessed and surface(option) mounting way. Using the simple line and elegant element, EPE-EM2 has the ability to transcend ordinary design, as well as product quality.

## FEATURES

- Round lens for open area application.
- Oval lens for escape route application.
- High power & efficiency LED.
- Surface or recessed mounting.

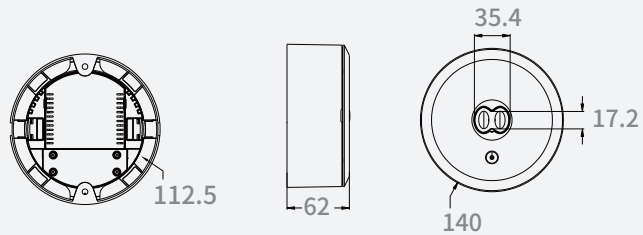
## Convenient installation

- Mount surface mouting kit on the surface screws and anchors
- After wiring connection..... snap unit on surface mount kit
- Align the marker

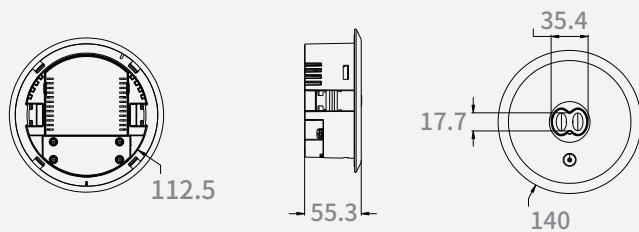


## Dimensions unit:mm

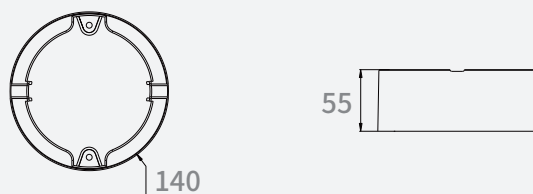
### Surface Mounting



### Recessed Mounting



### Surface Box



## Model List

Model	Input Voltage	Output Power	Lumen Output	Charge Duration	DischargeDuration	Battery	Test Mode
EPE-EM2-ST-AT-1H	200-240V	3W Max	240lm	24H	1H	LiFePO4 6.4V600mAh	AT
EPE-EM2-ST-MT-1H	200-240V	3W Max	240lm	24H	1H	LiFePO4 6.4V600mAh	MT
EPE-EM2-ST-AT-3H	200-240V	3W Max	240lm	24H	3H	LiFePO4 6.4V1500mAh	AT
EPE-EM2-ST-MT-3H	200-240V	3W Max	240lm	24H	3H	LiFePO4 6.4V1500mAh	MT
EPE-EM2-HO-AT-1H	200-240V	6W Max	450lm	24H	1H	LiFePO4 9.6V600mAh	AT
EPE-EM2-HO-MT-1H	200-240V	6W Max	450lm	24H	1H	LiFePO4 9.6V600mAh	MT
EPE-EM2-HO-AT-3H	200-240V	6W Max	450lm	24H	3H	LiFePO4 9.6V1500mAh	AT
EPE-EM2-HO-MT-3H	200-240V	6W Max	450lm	24H	3H	LiFePO4 9.6V1500mAh	MT

## Driver Datasheet

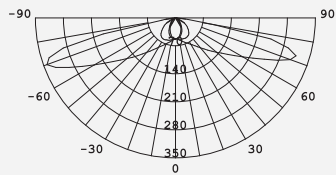
Model	EPE-EM2-ST	EPE-EM2-HO
Power Consumption	3W Max	6W Max
Frequency	50/60Hz	50/60Hz
Input Voltage	200-240V	200-240V
Discharge Efficiency	≥80%	≥80%
Output Power	1.8W±0.3W	3.5W±0.3W
Power Factor	≥0.3	≥0.3
Rated Input Current	≤0.035A	≤0.055A
Full load output voltage	DC2.8-3.2V	DC5.6-6.4V
Rated output current	580mA±10%	510mA±10%
Surge	0.5KV	0.5KV
Withstand voltage	AC3750V	AC3750V

## Technical Data Sheet

Model	EPE-EM2
Power Consumption	3W/6W Max
Input Voltage(V)	200-240V
LED	SAMSUNG 3535
CCT(K)±10%	5000K
"Luminous Flux(lm) ±10%"	240/450lm
CRI	>70
LED Driver	Built-out
Protection Class	Class II
IP Rating	IP20
Finishing color	White/Black
Material	PC
Glow wire test (°C)	COVER:850°C / LENS:650°C
Operating Temp (°C)	0°C ~45°C
Storage Temp (°C)	0°C ~65°C

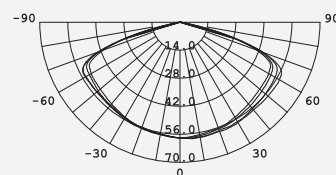
## Photometric Data

Oval lens for escape route application



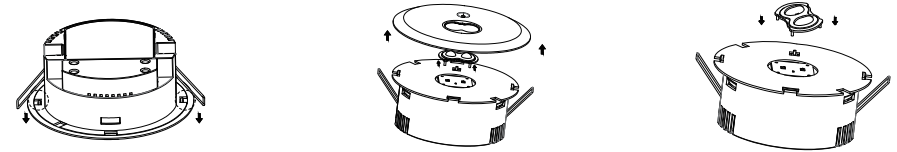
Beam angle: C0°:163° C90: 61°

Round lens for open area application



Beam angle: 148°

## Changeable lens



## Instructions for automatic test option

1.Once the unit is powered up it will automatically initiate a self test and diagnostics as follows:

- Every 4seconds: Checks for battery disconnection,charger board fault,lamp fault and transfer fault.
- Every month: Performs a 3minutes duration test.
- Every year:Performs a 1 hour or 3 hours duration test.

All test functions are factory preset and do not need field adjustment.

2.Dual Colour Indicator LED Status Mesnings

- Green Solid On Ready/Normal Operation
- Red Requires Service

•	One flashes, 4 seconds pause	Battery not connected
••	Two flashes, 4 seconds pause	Low battery voltage
•••	Three flashes, 4 seconds pause	Charger board fault
••••	Four flashes, 4 seconds pause	AC/DC transfer fault
•••••	Five flashes, 4 seconds pause	LED lamp fault

NOTE:After repairing a service fault,press and hole the test button for 2 seconds to reset the flashing indicator light to green.

3.Manual Testing

Press test button once	30 seconds duration test
Press test button twice within 2 seconds	3 minutes duration test
Press test button 3 times within 2 seconds	30 minutes duration test
Press test button 4 times within 2 seconds	1 hour or 3 hours



▼ [www.epowerem.com](http://www.epowerem.com) [info@epowertech.cn](mailto:info@epowertech.cn) TEL: +86-755 85272094 ▼

Add: 302, 6th Building, Hesheng Industrial park, FuHai Sub-district, Bao'an, Shenzhen, PRC