



EPE-EM5

LED Surface Mounting Emergency Light

CE CB  RoHS



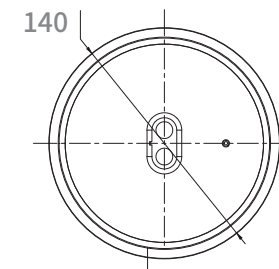
INTRODUCTION

EPE-EM5 LED emergency down light is controlled by smart IC, with self-test function. Round lens for open area, Oval lens for Pathway, suitable for ceiling mounting way. Using the simple line and elegant element, EPE-EM5 has the ability to transcend ordinary design, as well as product quality.

FEATURES

- Oval lens for escape route application.
- Round lens for open area application.
- Smart IC control.
- High power & efficiency LED.
- Lithium battery, long life time.

Dimensions unit:mm



Model List

Model	Input Voltage	Power Consumption	Charge Duration	Discharge Duration	Battery	Test Mode
EPE-EM5-ST-MT/AT-1H	200-240V	3W Max	24H	1H	LiFePO4 6.4V600mAh	Manual Test/Auto test
EPE-EM5-ST-MT/AT-3H	200-240V	3W Max	24H	3H	LiFePO4 6.4V1500mAh	Manual Test/Auto test
EPE-EM5-HO-MT/AT-1H	200-240V	6W Max	24H	1H	LiFePO4 9.6V600mAh	Manual Test/Auto test
EPE-EM5-HO-MT/AT-3H	200-240V	6W Max	24H	3H	LiFePO4 9.6V1500mAh	Manual Test/Auto test

Driver Datasheet

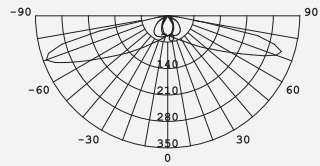
Model	EPE-EM5-ST	EPE-EM5-HO
Power	3W Max	6W Max
Frequency	50/60Hz	50/60Hz
Input Voltage	200-240V	200-240V
Discharge Efficiency	≥80%	≥80%
Output Power	1.8W±0.3W	3.5W±0.3W
Power Factor	≥0.3%	≥0.3%
Rated Input Current	≤0.35A	≤0.55A
Full load output voltage	DC2.8-3.2V	DC5.6-6.4V
Output current range	580mA±10%	510mA±10%
Short circuit protection	PASS	PASS
Over voltage protection	PASS	PASS
Surge	0.5KV	0.5KV
Withstand voltage	AC3750V	AC3750V

Technical Data Sheet

Model	EPE-EM5
Power Consumption	3W/6W Max
Input Voltage(V)	200-240V
LED	SAMSUNG 3535
CCT(K)±10%	5000K
"Luminous Flux(lm) ±10%"	250/450lm
CRI	>70
LED Driver	Built-out
Protection Class	Class II
IP Rating	IP20
Finishing color	White/Black
Material	PC
Glow wire test (°C)	COVER:850 C / LENS:650 C
Operating Temp (°C)	0 C ~45 C
Storage Temp (°C)	0 C ~65 C

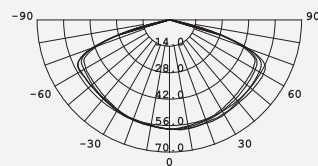
Photometric Data

Oval lens for escape route application



Beam angle: C0: 163° C90: 61°

Round lens for open area application



Beam angle: 148°

Instructions for automatic test option

- Once the unit is powered up it will automatically initiate a self test and diagnostics as follows:
 - Every 4 seconds: Checks for battery disconnection, charger board fault, lamp fault and transfer fault.
 - Every month: Performs a 3 minutes duration test.
 - Every year: Performs a 1 hour or 3 hours duration test.

All test functions are factory preset and do not need field adjustment.

2. Dual Colour Indicator LED Status Mesnings

- Green Solid On Ready/Normal Operation
- Red Requires Service

•	One flashes, 4 seconds pause	Battery not connected
••	Two flashes, 4 seconds pause	Low battery voltage
•••	Three flashes, 4 seconds pause	Charger board fault
••••	Four flashes, 4 seconds pause	AC/DC transfer fault
•••••	Five flashes, 4 seconds pause	LED lamp fault

NOTE: After repairing a service fault, press and hold the test button for 2 seconds to reset the flashing indicator light to green.

3. Manual Testing

Press test button once	30 seconds duration test
Press test button twice within 2 seconds	3 minutes duration test
Press test button 3 times within 2 seconds	30 minutes duration test
Press test button 4 times within 2 seconds	1 hour or 3 hours duration test



▼ www.epowerem.com info@epowertech.cn TEL: +86-755 85272094 ▼

Add: 302, 6th Building, Hesheng Industrial park, FuHai Sub-district, Bao'an, Shenzhen, PRC