



# EPU-ED1

Constant Power LED Emergency Driver



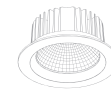


## INTRODUCTION

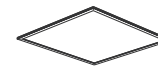
Epower Tech provides specialized UL Listed constant power Separated LED Emergency Driver, When AC power off, the Low Voltage Series change to the emergency mode without 1s. It's available in 8W, 12W, 25W models with a minimum of 90mins operating, adopts the long-life time LiFePO4 battery and provide 3 years warranty.

## FEATURES

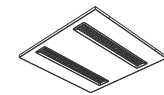
- Optional emergency power 8W, 12W, 25W
- Listed for field installation UL924 and CSA C22.2 NO.141
- Smart IC control constant output power
- High-temperature, maintenance-free, long life time LiFePO4 battery
- Temperature rating ambient: 50 °C
- High-efficiency for CEC title 20 compliance
- Manual test or Auto test function available



LED Downlight



LED Panel



Troffer

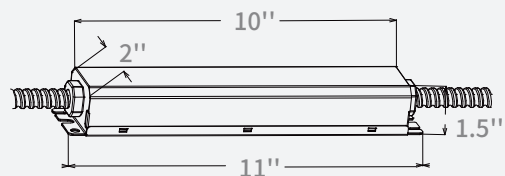


UFO

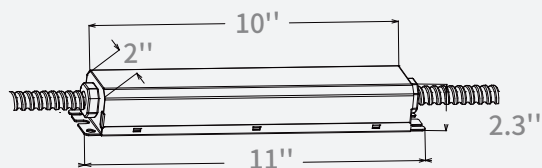
## Dimensions

Unit:inch

### EPU-ED1-8/12W



### EPU-ED1-25W



## Mounting configuration:

- Dual Flex (Standard version)

Provides dual flex for wiring to both the fixture or driver compartment and test accessories.



- Integral Non-Flex (Optional)

Allows for integral installation within the driver compartment. May also be mounted atop the fixture when used with a TMK cover accessory.



## Model List

Model	EPU-ED1-8W-LV	EPU-ED1-12W-LV	EPU-ED1-25W-LV
Output Power	8W	12W	25W
Output Voltage	10-50V	10-50V	18-50V
Input Current	≤0.1A	≤0.15A	≤0.15A
Input Power	5W	7W	7W
Input Voltage	100-277V AC	100-277V AC	100-277V AC
Illumination Time	≥90 mins	≥90 mins	≥90 mins
Battery	LiFePO4 6.4V 3300mAh	LiFePO4 9.6V 3300mAh	LiFePO4 9.6V 6600mAh
Temperature Rating	5 C ~50 C	5 C ~50 C	5 C ~50 C
Warranty	3 years	3 years	3 years
Certificate	UL LISTED & CEC Title 20		

## Instructions for automatic test option

1. Once the unit is powered up it will automatically initiate a self test and diagnostics as follows:

- Every 4seconds: Checks for battery disconnection, charger board fault, lamp fault and transfer fault.
- Every month: Performs a 3minutes duration test.
- Every year: Performs a 90 minutes duration test.

All test functions are factory preset and do not need field adjustment.

## 2. Dual Colour Indicator LED Status Mesnings

- Red Solid On Ready/Normal Operation
- Red Blinks Requires Service

•	One flashes, 4 seconds pause	Battery not connected
••	Two flashes, 4 seconds pause	Battery short or low battery voltage
•••	Three flashes, 4 seconds pause	Charger board fault
••••	Four flashes, 4 seconds pause	AC/DC transfer fault
•••••	Five flashes, 4 seconds pause	LED lamp fault

NOTE: After repairing a service fault, press and hold the test button for 2 seconds to reset the flashing indicator light to green.

## 3. Manual Testing

Press test button once	30 seconds duration test
Press test button twice within 2 seconds	3 minutes duration test
Press test button 3 times within 2 seconds	30 minutes duration test
Press test button 4 times within 2 seconds	90 minutes duration test



▼ [www.epowerem.com](http://www.epowerem.com) [info@epowertech.cn](mailto:info@epowertech.cn) TEL: +86-755 85272094 ▼  
Add: 302, 6th Building, Hesheng Industrial park, FuHai Sub-district, Bao'an, Shenzhen, PRC

## Wire Diagram

