



EPE-EM9

LED Emergency Downlight

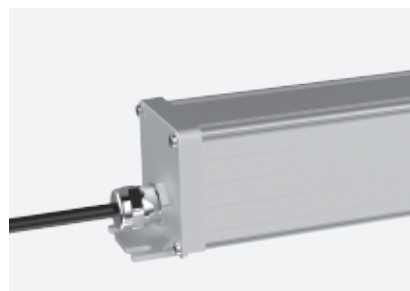
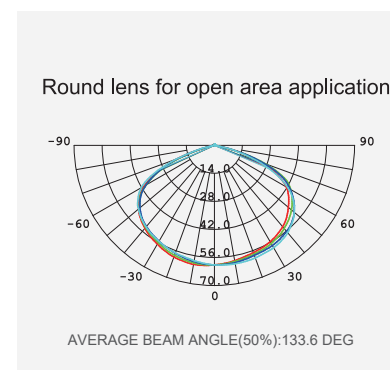
IP65 CB CE  RoHS



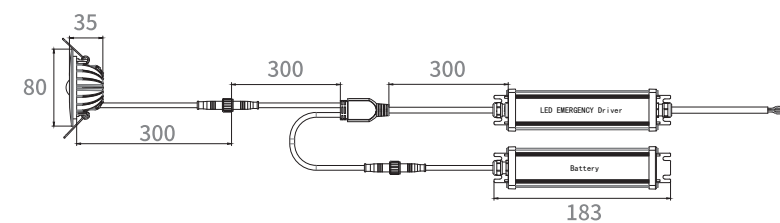
FEATURES

- Round lens for open area application.
- LiFePO4 battery.
- High power & efficiency LED.
- 80mm adapter ring for bigger cuthole included.

Photometric Data



Dimensions unit:mm



Model List

Model	Input Voltage	Input Current	Power	Output Charge Current	Charge / Discharge	Battery	Test Mode
EPE-EM9-LO-AT-1H	220-240VAC	25mA Max	2W Max	120mA	24H/1H	LiFePO4 6.4V 600mAh	Auto
EPE-EM9-ST-AT-1H	220-240VAC	25mA Max	4W Max	300mA	24H/1H	LiFePO4 6.4V 1500mAh	Auto
EPE-EM9-HO-AT-1H	220-240VAC	25mA Max	6W Max	300mA	24H/1H	LiFePO4 6.4V 1500mAh	Auto
EPE-EM9-LO-AT-2H	220-240VAC	25mA Max	2W Max	300mA	24H/2H	LiFePO4 6.4V 1500mAh	Auto
EPE-EM9-ST-AT-2H	220-240VAC	25mA Max	4W Max	300mA	24H/2H	LiFePO4 6.4V 3200mAh	Auto
EPE-EM9-HO-AT-2H	220-240VAC	25mA Max	6W Max	300mA	24H/2H	LiFePO4 6.4V 4500mAh	Auto
EPE-EM9-LO-AT-3H	220-240VAC	25mA Max	2W Max	300mA	24H/3H	LiFePO4 6.4V 1500mAh	Auto
EPE-EM9-ST-AT-3H	220-240VAC	25mA Max	4W Max	300mA	24H/3H	LiFePO4 6.4V 3200mAh	Auto
EPE-EM9-HO-AT-3H	220-240VAC	25mA Max	6W Max	300mA	24H/3H	LiFePO4 6.4V 4500mAh	Auto

Driver Datasheet

Model	EPE-EM9-LO	EPE-EM9-ST	EPE-EM9-HO
Frequency	50/60Hz	50/60Hz	50/60Hz
Efficiency	≥60%	≥60%	≥60%
Total load wattage	4W Max	4W Max	4W Max
Power Factor	≥0.3	≥0.3	≥0.3
Rated Input Current	≤0.025A	≤0.025A	≤0.025A
Full load output voltage	DC8.0-9.5V	DC8.0-9.5V	DC8.0-9.5V
Output current range	210mA±10%	450mA±10%	650mA±10%
Short circuit protection	PASS	PASS	PASS
Over voltage protection	PASS	PASS	PASS
Over temperature protection	PASS	PASS	PASS
THD	—	—	—
Surge	0.5KV	0.5KV	0.5KV
Withstand voltage	AC3750V	AC3750V	AC3750V

Technical Data Sheet

Model	EPE-EM9-LO	EPE-EM9-ST	EPE-EM9-HO
Watt(W)	2W Max	4W Max	6W Max
Input Voltage(V)	AC220-240V	AC220-240V	AC220-240V
LED	SAMSUNG 3535	SAMSUNG 3535	SAMSUNG 3535
CCT(K)	5000K	5000K	5000K
"Luminous Flux(lm) ±10%"	Non-DIM 250lm±10%(1H/3H)	550lm±10%(1H/3H)	750lm±10%(1H/3H)
CRI	>70	>70	>70
LED Driver	Built-out	Built-out	Built-out
Protection Class	Class I	Class I	Class I
IP Rating	IP65	IP65	IP65
Finishing color	Silvery RAL 9006	Silvery RAL 9006	Silvery RAL 9006
Material	Aluminum+PC	Aluminum+PC	Aluminum+PC
Glow wire test (°C)	LENS:650 ℃	LENS:650 ℃	LENS:650 ℃
Operating Temp.(°C)	0 ℃ ~45 ℃	0 ℃ ~45 ℃	0 ℃ ~45 ℃



▼ www.epowerem.com info@epowertech.cn TEL: +86-755 85272094 ▼

Add: 302, 6th Building, Hesheng Industrial park, FuHai Sub-district, Bao'an, Shenzhen, PRC